

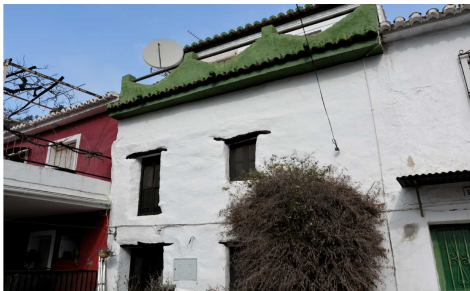
Sold

VS0817



Village House in Vinuela

€ 79,000



2



2



97m²



300m²



N/A

Casita Gilly is a rare opportunity for a fully authentic reformed village house with bags of character around every corner. Various levels, exposed stone and wooden beams, not a straight wall in sight this is will appeal to a buyer looking for the traditional home in a very good location within Vinuela village. With a double car port located off a newly paved access road steps lead down to an open workshop/ wood store beneath the parking area. A small pathway leads to the front door which has a bedroom and bathroom on this level, Upstairs is a further bedroom. On the lower floor is a basic kitchen and lounge which opens up onto a front south facing terrace. Very quirky, with a huge advantage of double parking, very rare in villages and too ... (Ask for More Details!)